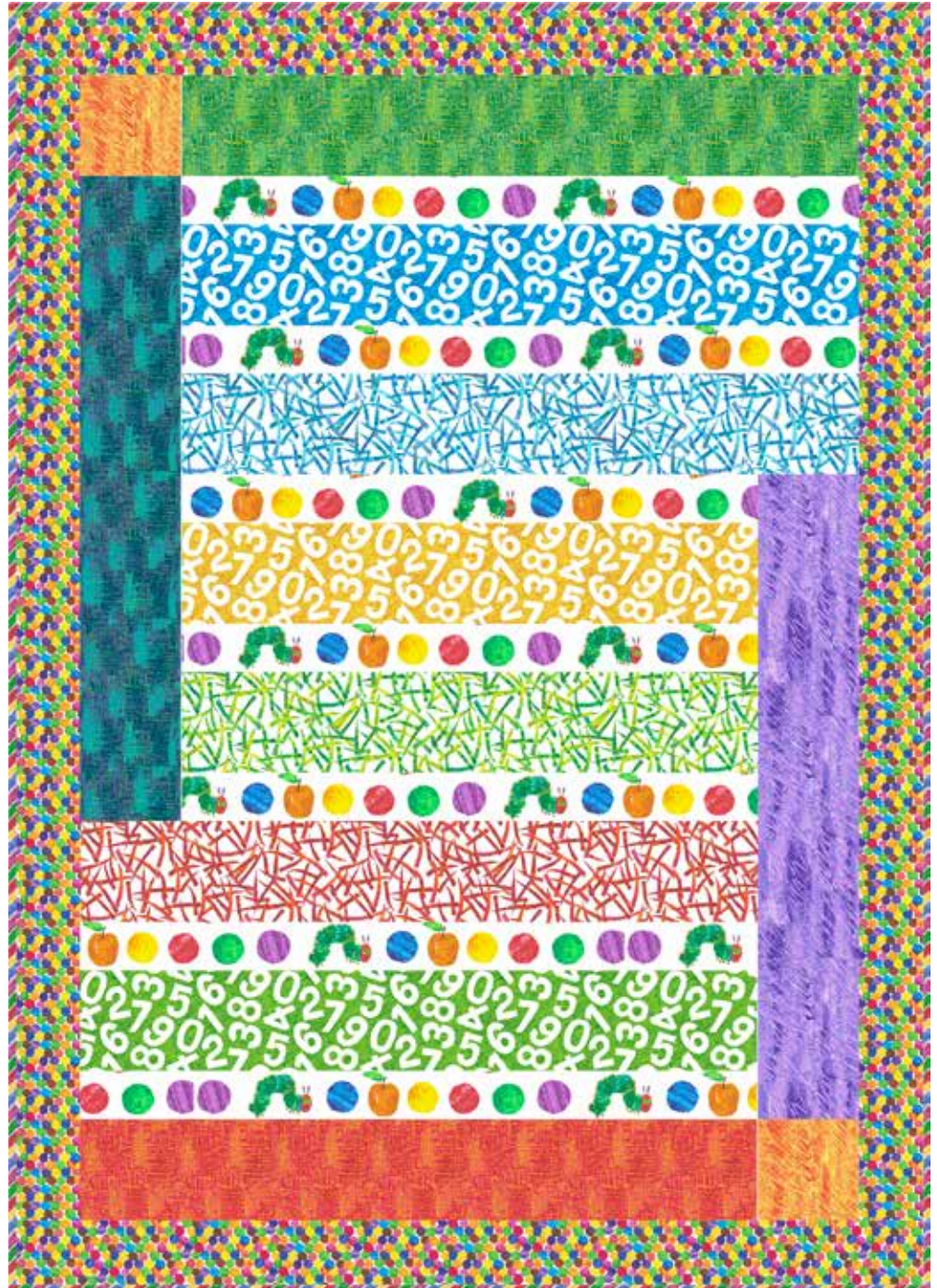
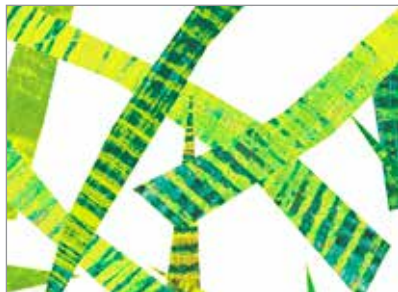


The Very Hungry Caterpillar

FABRICS BY ERIC CARLE, LLC



Inchin' Along Quilt Design:
Vanilla Latte Quilts

Quilt Size: 56½" x 79"

andoverfabrics.com

andover



makower uk
The Henley Studio

Free Pattern Download Available

1384 Broadway New York, NY 10018
Tel. (800) 223-5678 • andoverfabrics.com

Revised 9/12/13

Inchin' Along



Introducing Andover Fabrics new collection: **The Very Hungry Caterpillar** by Eric Carle, LLC
Quilt designed by Vanilla Latte Quilts

Quilt finishes 56½" x 79"

Based on a book that's been adored for years by kids and their moms, Eric Carle's hungry caterpillar fabrics are perennial favorites. Here is a quilt made with simple strips that show the little caterpillar inching along at a steady pace.

Fabric Requirements

		Yardage	Fabric
Fabric A	border, binding	1½ yards	3474-M
Fabric B	setting	fat ⅛ yard	3476-Y
Fabric C	setting	1¼ yards	7232-X
2 Lt. Prints	setting	¼ yard ea.	3475-Y, 7237-XG
6 Med. Prints	setting	¼ yard ea.	3475-B, 3475-G, 3477-G, 3477-R, 7237-XB, 7237-XR
2 Dk. Prints	setting	¼ yard ea.	3476-P, 3477-B
Backing		3½ yards	7236-X

Cutting Directions

Note: Read assembly directions before cutting patches. All measurements are cut sizes and include ¼" seam allowances. A fat ⅛ is a 9" x 20"-22" cut of fabric. Borders include extra length for insurance. WOF designates the width of fabric from selvedge to selvedge (approximately 42" wide).

Fabric A Cut (7) strips 4½" x WOF, pieced to make the following:
(2) side borders 4½" x 73"
(2) top/bottom borders 4½" x 59"
Cut (7) strips 2½" x WOF for binding

Fabric B Cut (2) squares 6¾" x 6¾"

Fabric C Fussy-cut (4) strips 3½" x 42½"
Fussy-cut (3) strips 3½" x 36¼"

2 Lt. Prints From each:
Cut (1) strip 6¾" x 36¼"

6 Med. Prints From each:
Cut (1) strip 6¾" x 42½"

2 Dk. Prints From each:
Cut (1) strip 6¾" x 40½"

Backing Cut (2) panels 42" x 61", pieced to fit quilt top with overlap on all sides

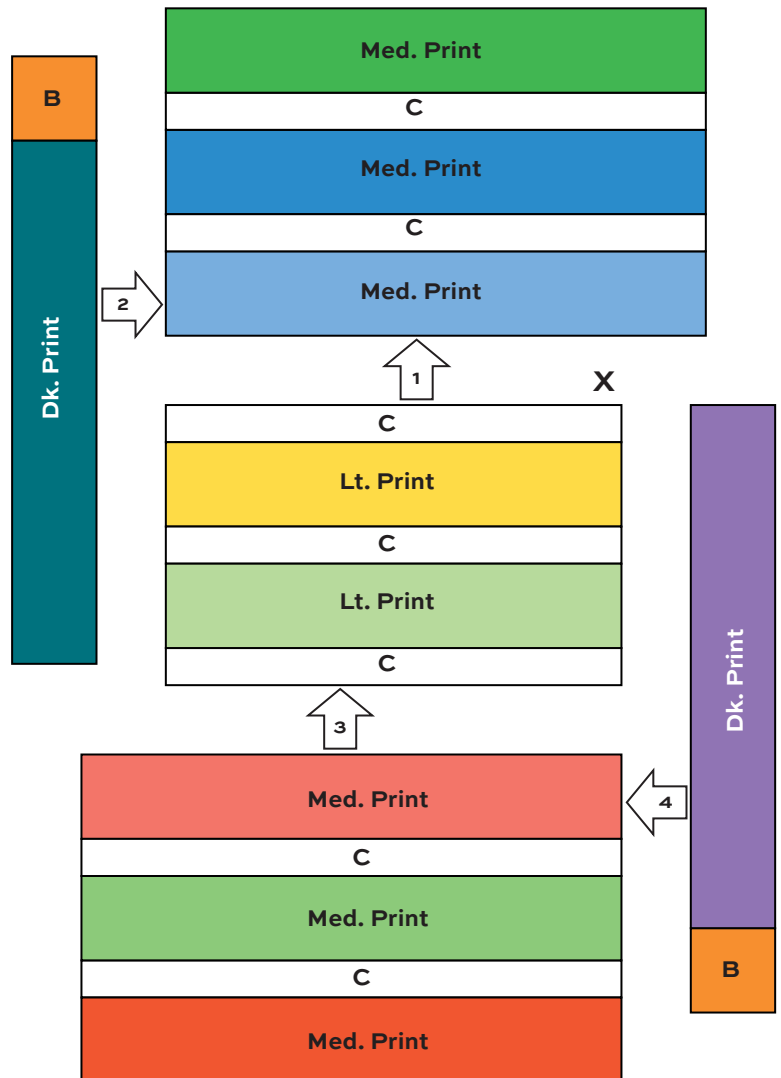
Inchin' Along Quilt

Making the Quilt

1. Refer to the Quilt Diagram for the following. Sew 3 Fabric C $36\frac{1}{4}$ " strips together with 2 light print $36\frac{1}{4}$ " strips to make the center panel. Press seam allowances toward the light prints. Set aside.
2. Sew 2 Fabric C $42\frac{1}{2}$ " strips together with 3 medium strips to make the top panel as shown. Repeat to make the bottom panel. Set aside.
3. Sew Fabric B squares to an end of the dark blue strip and the dark purple strip. Set aside.
4. The various panels and units are put together in a specific order as shown by the numbers on the Quilt Diagram. The first seam is a "partial seam." Sew the top panel to the shorter center panel, aligning the panels along their left edges (seam #1). Stop the row of stitching about 3" from the right end of the shorter center panel and backstitch (at the "X").
5. Sew the dark blue strip from Step 3 to the left side of this unit (seam #2). Hint: Trim the dark blue strip even with the unit if necessary.
6. Sew the bottom $42\frac{1}{2}$ " panel to the bottom of the quilt (seam #3).
7. Sew the purple strip from Step 3 to the right of the quilt (seam #4). Hint: Trim the purple strip even with the unit if necessary.
8. Complete the partial seam from Step 4, beginning stitching at the X, and stitching across the end of the purple strip.
9. Measure through the center of the quilt from top to bottom and cut 2 Fabric A border strips this length. Sew to the sides. Measure the quilt from side to side, including the borders, and cut 2 Fabric A border strips this length. Sew to the top and bottom.

Finishing the Quilt

10. Layer the quilt with batting and backing and baste. Quilt in the ditch along the strips. Quilt motifs of your choice in the wider strips. Bind to finish the quilt.



Quilt Diagram

The Very Hungry Caterpillar

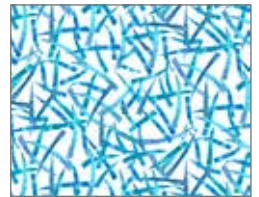
FABRICS © ERIC CARLE LLC



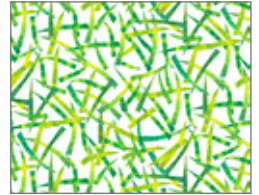
7232-X*



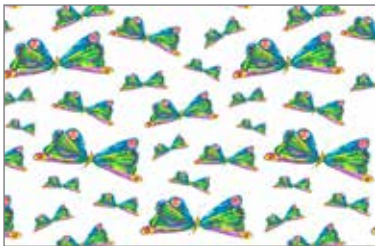
7233-X



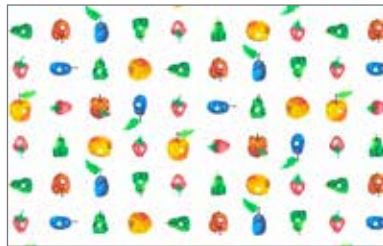
7237-XB*



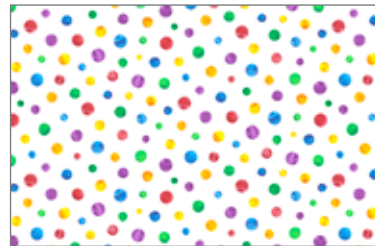
7237-XG*



7234-X



7235-X



7236-X



7237-XR*



3473-G
Also available in
flannel: F3473-G



5281-M*



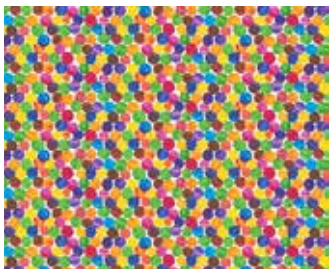
5282-M



3475-B*



3475-G*



3474-M*
Also available in
flannel: F3474-M



5283-M



3475-Y*

*Asterisk indicates fabric used in quilt pattern. Fabrics shown are 10% of actual size.

andover

makower uk
The Henley Studio

Free Pattern Download Available

1384 Broadway New York, NY 10018
Tel. (800) 223-5678 • andoverfabrics.com

Revised 9/12/13

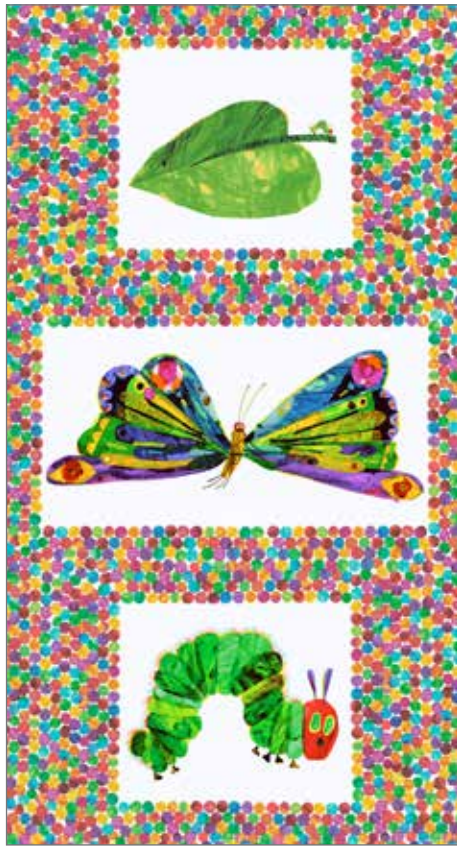
The Very Hungry Caterpillar

FABRICS © ERIC CARLE LLC

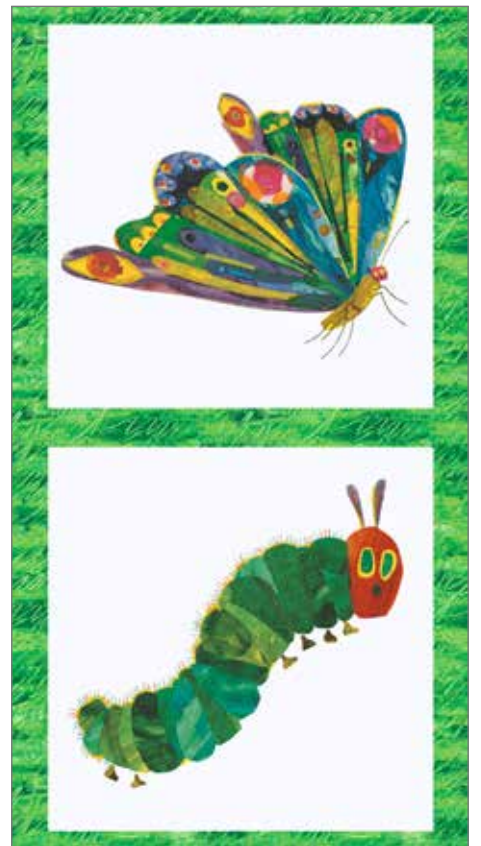
Fabrics shown are 10% of actual size.



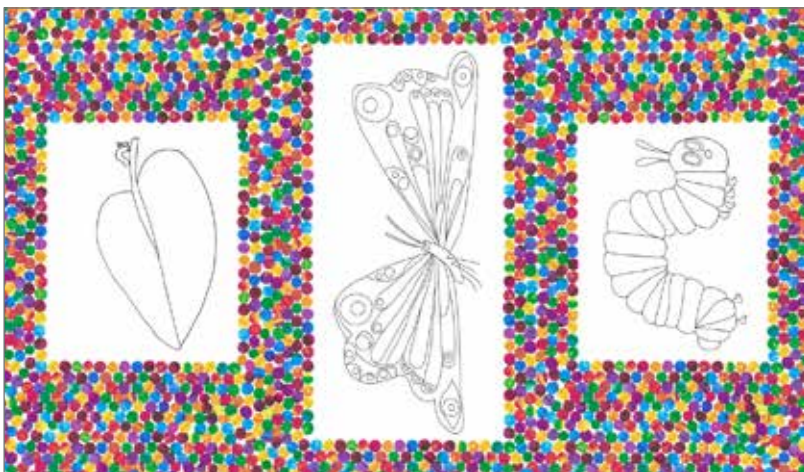
3472-M



3471-M



5280-M



5626-M



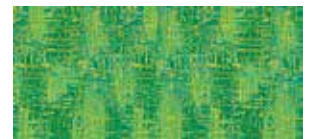
3476-G*



3477-B*



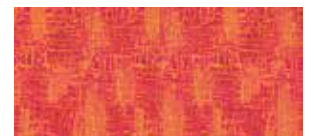
3476-P*



3477-G*



3476-Y*



3477-R*

andover

makower uk
The Henley Studio

Free Pattern Download Available

1384 Broadway New York, NY 10018
Tel. (800) 223-5678 • andoverfabrics.com

Revised 9/12/13